

# Community Futures

## Core House

*development from House 1*

## Preferences

*communication with stakeholders*

## Innovation

*new approach to building houses and simultaneously building capacity*

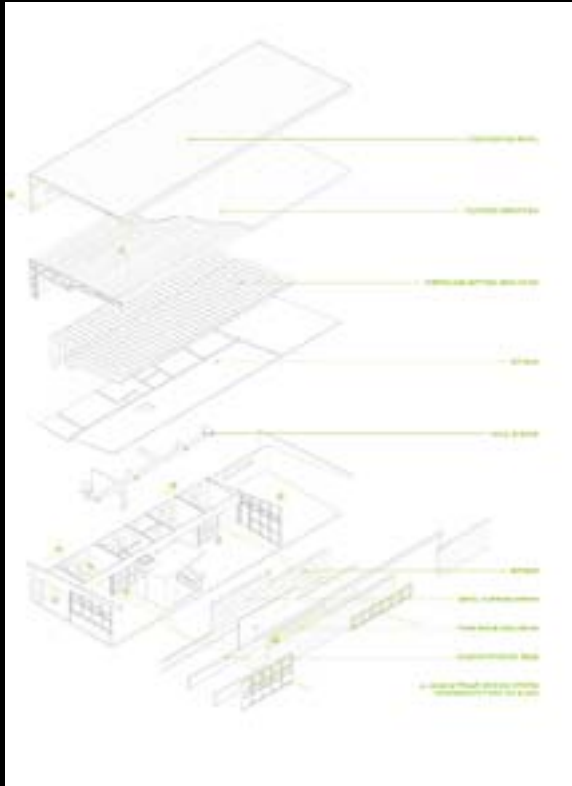


LSU

OCDD

office of community design and development

# House 2



LSU

OCDD

office of community design and development

# Core House

Strategic approach to make  
community-built housing

Habitat and similar approaches

Easier and faster by reducing  
reliance on for-hire subcontractors



LSU

OCDD

office of community design and development

# Preferences

Community stakeholders assist researchers to develop community preferences for design characteristics



LSU

OCDD

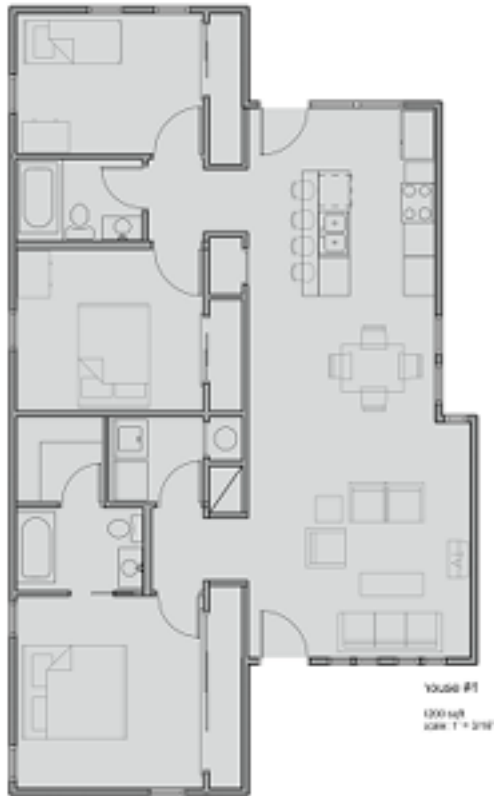
office of community design and development



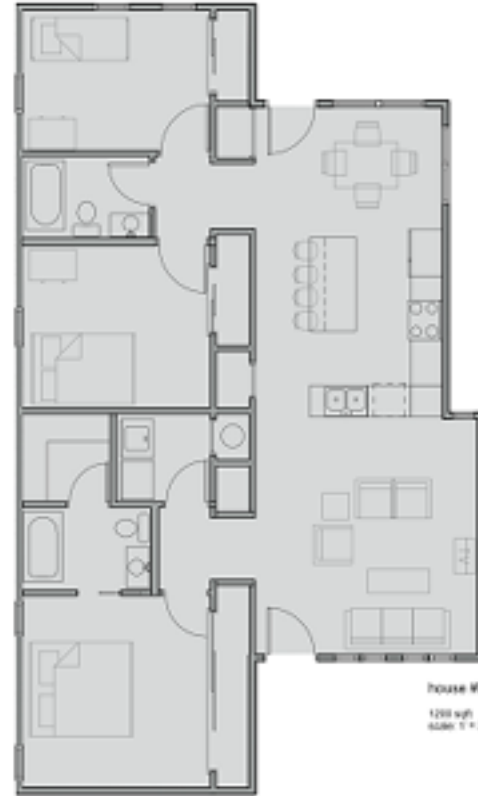
LSU

OCDD

office of community design and development



House #1  
1000 sqft  
scale 1" = 2 1/2\''



House #2  
1200 sqft  
scale 1" = 2 1/2\''

LSU

OCDD

office of community design and development

# Preferences

## Kitchen Layout

Open 56%  
 Closed 44%  
 n/r 0

## Outdoor Space Location

Front 20%  
 Back 16%  
 Both 52%  
 n/r 12%

## Bigger Outdoor Space

Front 1 %  
 Back 32%  
 Both 16%  
 n/r 32%

## Foundation Option

Raised 64%  
 Slab on grade 32%  
 n/r 4%

## Accessible Design

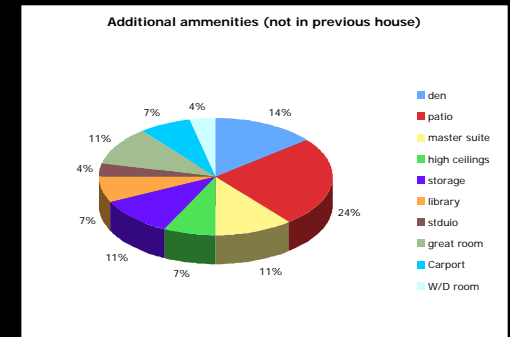
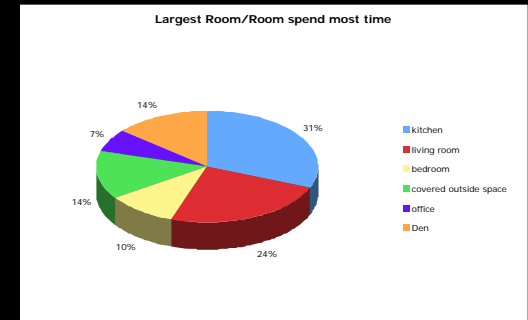
Yes 32%  
 No 56%  
 n/r 12%

## Which Room Largest/ Spend the most time

Kitchen 31%  
 Living Room 24%  
 Bedroom 10%  
 Covered Outside Space 14%  
 Office 7%  
 Den 14%  
 n/r 0

## Desired Additions to House

Den 4  
 Patio 7  
 Master Suite 3  
 High Ceilings 2  
 Storage 3  
 Library 2  
 Studio 1  
 Great Room 3  
 Carport 2  
 Washer/Dryer Room 1



LSU

OCDD

office of community design and development

# Innovation

Build three “stick-built” houses  
thirty days  
20 unskilled participants  
Homebuyer education  
Team building  
On-the-job training



LSU

OCDD

office of community design and development





LSU

OCDD

office of community design and development



LSU

OCDD

office of community design and development



LSU

OCDD

office of community design and development

# Why This Is Important

need new strategies for building new affordable housing quickly that is context sensitive and responsive to homebuyer needs.



LSU

OCDD

office of community design and development



LSU

OCDD

office of community design and development

