



# “Models for Institutionalizing Community Partnerships On Campus and in the Community”

Presented By:

**Barbara C. Medley, Ph. D.**

**University of Tennessee at Chattanooga**

# University of Tennessee at Chattanooga





The University of Tennessee at Chattanooga

**Community Outreach Partnership Center**

**2000-2006**

**M. L. King Community-University Partnership  
For Community Revitalization**

Director: Barbara C. Medley, Ph. D.

University of Tennessee at Chattanooga

**Community Outreach Partnership Center (COPC)**



401 E. M.L. King Blvd Chattanooga, TN 37403

A nighttime photograph of a modern building with a distinctive mountain peak silhouette on its roof. The building is illuminated from within, and its lights are reflected in a body of water in the foreground. The scene is framed by dark, leafy trees in the foreground. The sky is dark, and the overall atmosphere is serene and modern.

**A community in  
transition...**

**effecting change through  
PARTNERSHIP**

**CHATTAHOOGA**  
THE ATTRACTIONS ONLY NATURAL

**The University...**



**University of Tennessee at Chattanooga, Fletcher Hall**

# University of Tennessee at Chattanooga (UTC)

- A Metropolitan University
- Over 68 Degree Programs, including Master's & Doctoral
- More than 600 Faculty, Full-time and Part-Time

“UTC had been a private institution for 83 years. It retains the best aspects of that private tradition, yet offers all the resources of a modern public university.” – UTC Website

<b>UTC Student Body</b>	
Undergraduate	7197
Professional & Graduate	1331
<b>Total</b>	<b>8528</b>



# Community Outreach Partnership Center (COPC)

Funded in 1999,  
Implemented in 2000





# Why UTC Partnered with the M. L. King Community for Revitalization:

- Community Deterioration
- Loss of Residential Population
- Loss of Business & Commercial Establishments
- Major Declines in African-American businesses
- Perception of area as a High Crime Sector

# M.L. King Community is Adjacent to Downtown Chattanooga, the Riverfront, and Area Attractions...



# ...home to several Businesses & Institutions...

- Bell South
- City of Chattanooga
- Hamilton County  
Social Services  
Complex
- Chattanooga  
Community Kitchen
- Salvation Army
- Area Churches



CITY OF  
CHATTANOOGA



NEED KNOWS NO SEASON

...and borders the University of Tennessee at Chattanooga.



UTC's University Center

# COPC Services & Resources

- Rehabilitation
- Crime Prevention
- Housing Assistance
- Youth Development
- Health & Wellness
- Economic Development





# COPC 2000 Initiatives

- Neighborhood Organization Development
- Crime Prevention/Community Policing
- Homeownership Workshops
- Computer Skills Training
- Youth Development Programs
- Health & Wellness Programs
- Soft Skills Job Training
- Entrepreneurship Training





- Computer Skills Training



- Youth Development Program





# **New Directions Grant:**

Focus on -

- Economic development,
- Community cohesion,
- Research on the area's transient and homeless populations



# New Directions Grant Goals:

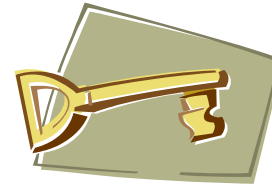
- Increase residential growth
- Stimulate and guide commercial & business development
- Build community cohesion

# New Directions Grant Goals: (Cont'd)

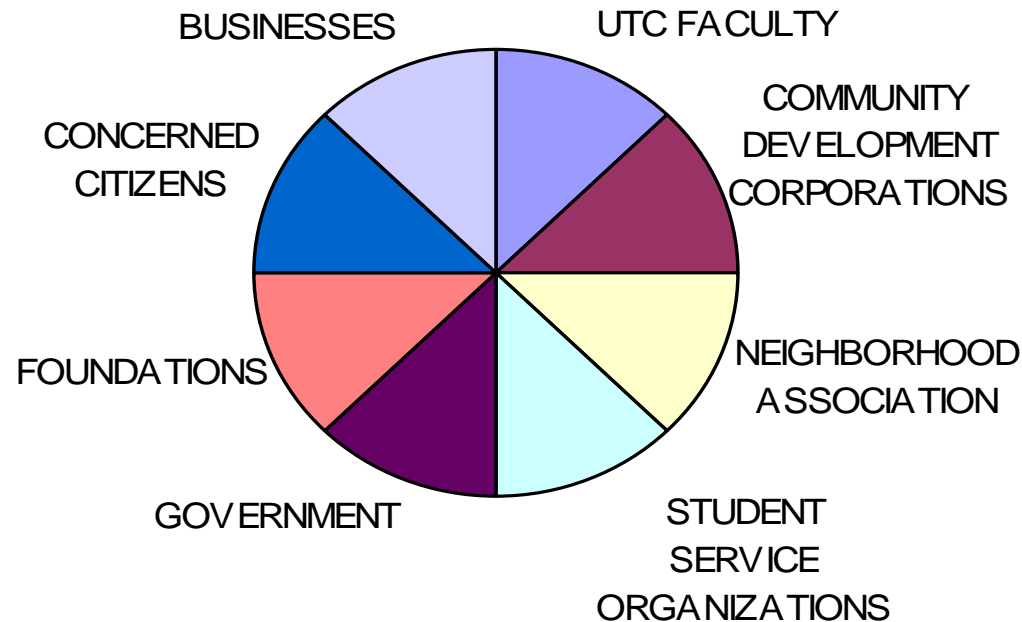
- Complete research on client & transient community
- Establish respect for community boundaries
- Build leadership capacity in housing, economic development, and services.  
**How Do We Do This.....?**

# Making It Happen...

## Partnerships are the Key



### COPC Partnerships





# **Summary of Institutionalization Models**



# MODELS

- 1. Community Revitalization Engagement Programs**
- 2. Service Learning/Internship Based Engagement Programs**
- 3. Public Policy Community Engagement Programs**

# 1. Community Revitalization Engagement Programs





# Community Revitalization...

- Key purpose of COPC programs
- Sustained programs should retain this focus
- Urban community problems longer term than duration of COPC grant
- Major question: How to stay involved?





# Assessing future revitalization engagement:

- What is the status of the community for which the initial COPC grant was obtained?
- Are there are other pressing needs in the community requiring a sustained involvement?
- What resources are available or can be leveraged?



# If work is complete:

- Should you move on to another community?
- Are there substantive issues that could benefit from a university-community partnership initiative?
- If so, how can this new initiative be developed, structured and funded?



# New community...

- What partnerships must be established with the new community?
- What university involvement is possible (faculty, administrators, students)?
- What strategies are needed to establish new partnerships?



# Revitalization engagement...

- A critical need in urban communities with problems of poverty, deterioration, economic decline, and changing demographics.
- Must be supported by substantial resources:
  - strong community partnerships
  - political awareness
  - financial resources

## 2. Service Learning/Internship Based Engagement Programs:





# **Service Learning/Internship Based Engagement Programs**

- Generally compatible with traditional university teaching mission
- Relatively low in cost for the university
- Provide beneficial services and assistance to community agencies and organizations.



# **Service Learning/Internship Based Engagement Programs...**


- Provide strong academic benefits to students - “hands-on” experience.
- Offer an instructional alternative to faculty
- Give the university community visibility and engagement recognition



# Requirements:

- Administrative commitment
- Faculty commitment
- Matching of faculty and course objectives with community needs
- Establishment of appropriate processes and methods for set up, monitoring, and evaluation.





# Service Learning/Internship Program Areas:

- Service Learning
- Experiential Learning
- Internship Programs
- Language and Cultural Facilitation Programs
- Volunteer Programs
- Applied Research Projects
- Community Support Programs



# Community Support Programs

## ■ Examples:

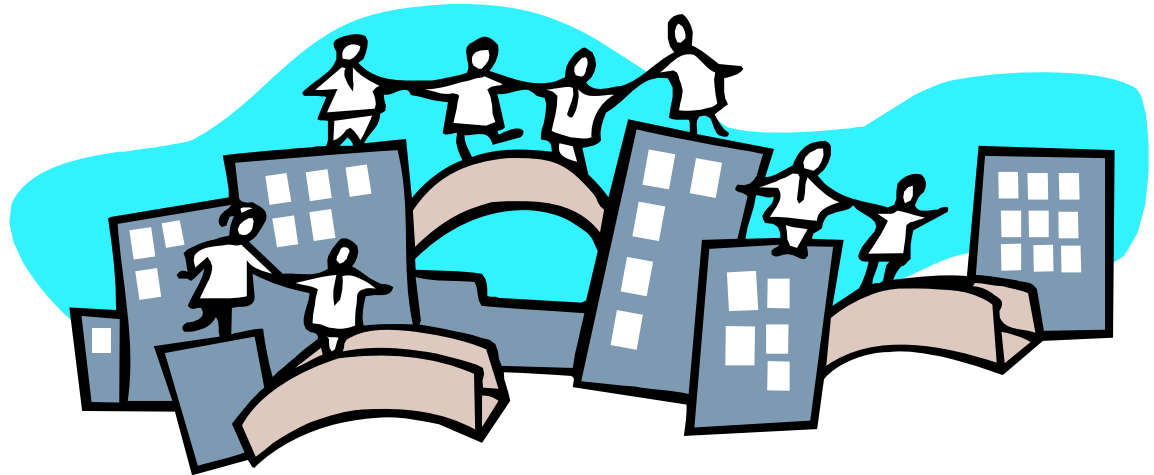
- Health care related assistance
- Academic tutoring in local schools
- Youth development and mentorship
- Community organization assistance

# Limits...

Service Learning/Internship Programs may not have a direct, sustained impact on community needs that reflect more entrenched problems such as

- poverty
- Neighborhood deterioration
- inadequate housing
- healthcare access issues
- economic development needs

# 3. Public Policy Community Engagement Programs





# Public Policy Community Engagement Programs

- May be combined with other models.
- Focus is on the deep-seated issues of the community and building community advocacy.



# Public Policy Community Engagement Programs

Generally characterized by:

1. An interdisciplinary approach to community engagement that is embraced by the university
2. Projects focus on a specific community need area or several areas
3. Community partnerships likely to be diverse, and specific to problem areas being addressed.



# Public Policy Engagement...

1. Includes a research program that identifies public policy-related issues associated with identified community needs
2. Research provides relevant data and information
3. Faculty and students are engaged in the research process
4. A service learning component can be incorporated that allows participant observation methodologies to be utilized.



# Public Policy Community Engagement Programs...

5. Research-based products are disseminated to community leaders and the broader community as information.
6. Products are helpful in building political support for appropriate action at the community level.
7. The university has a visible role as a knowledge and data resource for the community at large.





# Possibilities/Results...

- A sustained, community engagement process is institutionalized that includes administrative commitment, faculty involvement, and student academic enhancement.



# Possibilities/Results...

- Research projects and service program proposals can be developed under the auspices of the public policy engagement institute.
- Community-based agencies can benefit from the data and partnerships developed by the institute when seeking program grants to address community needs.



# On-going community impact...

- Community conversations, action, and up-to-date data aid policy and decision makers in making more informed, community-conscious decisions that can more effectively address local needs.



# Funding??

Potential sources:

- University commitments
- Local governments
- Foundations – local and public interest



# Contact Information

Barbara C. Medley, Ph. D.

University of Tennessee at Chattanooga

[Barbara-Medley@utc.edu](mailto:Barbara-Medley@utc.edu)